



# New House Farm

A unique & special place

## SUPPLIER TERMS AND CONDITIONS

NEW HOUSE FARM, LORTON, COCKERMOUTH, CUMBRIA, CA13 9UU

**THIS DOCUMENT MUST BE READ AND ALL TERMS AGREED TO PRIOR TO ALL SUPPLIERS PROVIDING SERVICES ON THE PREMISES.**

**THE VENUE MUST HAVE A SIGNED COPY OF THIS DOCUMENT IN THE FORM OF AN ANNUAL OR ONE-OFF AGREEMENT.**

**V2 19.04.2025**

## Agreed Terms

### 1. Interpretation

**1.1.** In this Contract, the following words and expressions shall have the followings:

**The Supplier:** a supplier of goods or services (such as floristry, catering, lighting, staging, equipment, or entertainment) hired by the Client for the Event, including their staff.

**The Venue:** refers to New House Farm (Lorton) Limited of New House Farm, Lorton, Cockermouth, CA13 9UU

**New House Farm Representative:** the person(s) designated as the main point(s) of onsite contact (or their authorised representative(s)) during the Event and in relation to all matters regarding the Event.

**Client:** the person(s) or corporate body and/or its authorised representative(s) who have contracted you The Supplier for the event at The Venue under their own separate contract.

**Contract:** the contract between the Client and The Supplier for the hire of the Venue and supply of the Services or Consumables in accordance with the Venue Hire Form and these Venue Hire Conditions.

**Services:** the services to be provided by The Supplier under the Contract, including without limitation, the supply of catering services and Consumables, and any additional services or equipment, at the Event

**Consumables:** the food to be supplied at the Event.

**Event:** the wedding, receptions, corporate/charity functions, banquets, private room hire, or birthdays for which the Client is hiring the Venue, as set out in the Venue Hire Form.

**Equipment and Materials:** all equipment and materials reasonably necessary for the provision of the Services provided by The Supplier.

**Force Majeure Event:** any circumstance not within The Venues reasonable control including, without limitation:

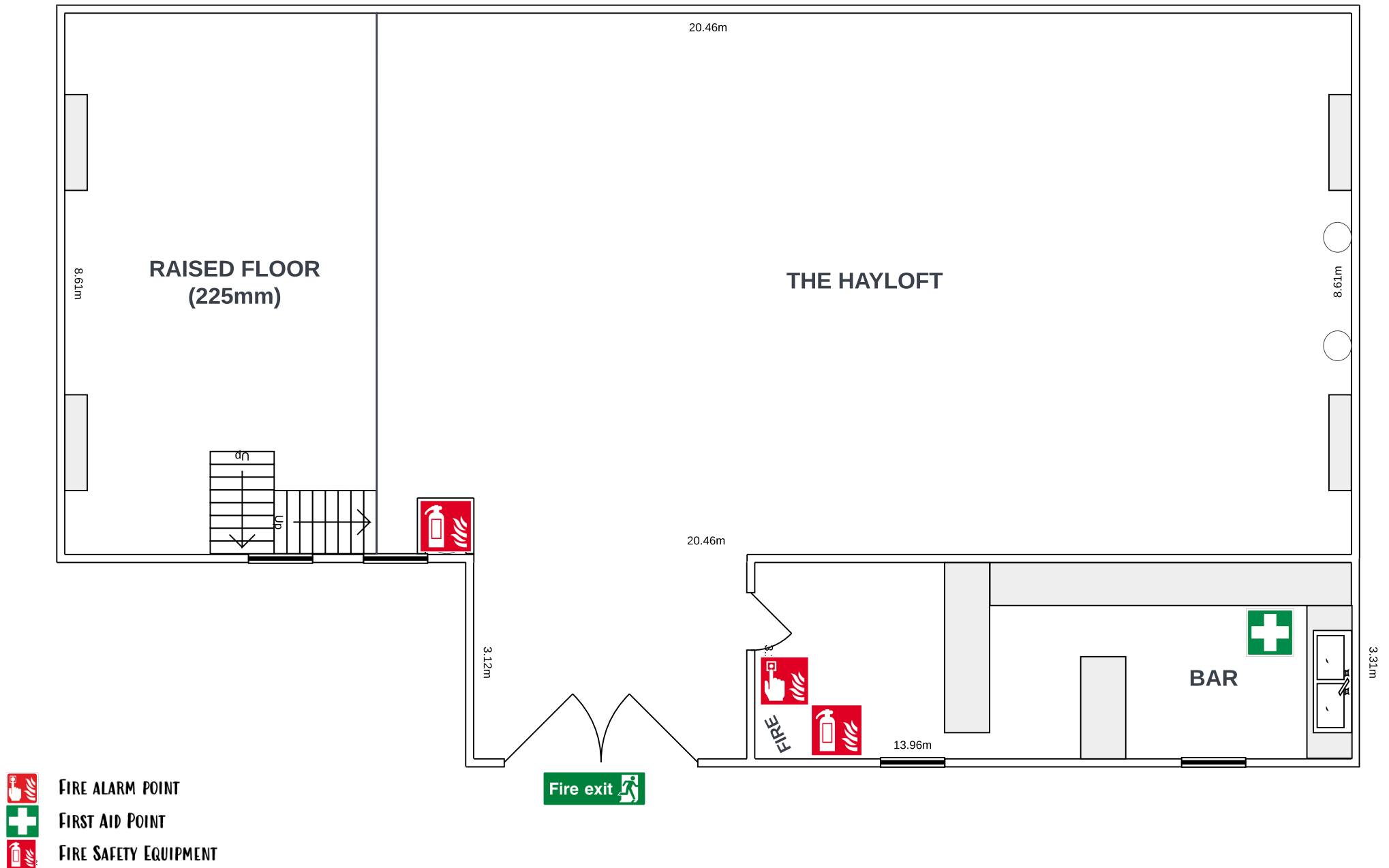
- (a) acts of God, flood, drought, earthquake or other natural disasters;
- (b) terrorist attack, civil war, civil commotion or riots, war, the threat of or preparation for war, armed conflict, imposition of sanctions, embargo, or breaking off of diplomatic relations;
- (c) nuclear, chemical or biological contamination or sonic boom;
- (d) any law or any action taken by a government or public authority, including without limitation imposing an export or import restriction, quota or prohibition, or failing to grant a necessary licence or consent;
- (e) collapse of buildings, fire, explosion or accident;
- (f) non-performance by third party suppliers or subcontractors; and
- (g) interruption or failure of utility service.

**Public Liability Insurance:** valid cover for the cost of claims made by members of the public for incidents that occur in connection with The Suppliers business activities.

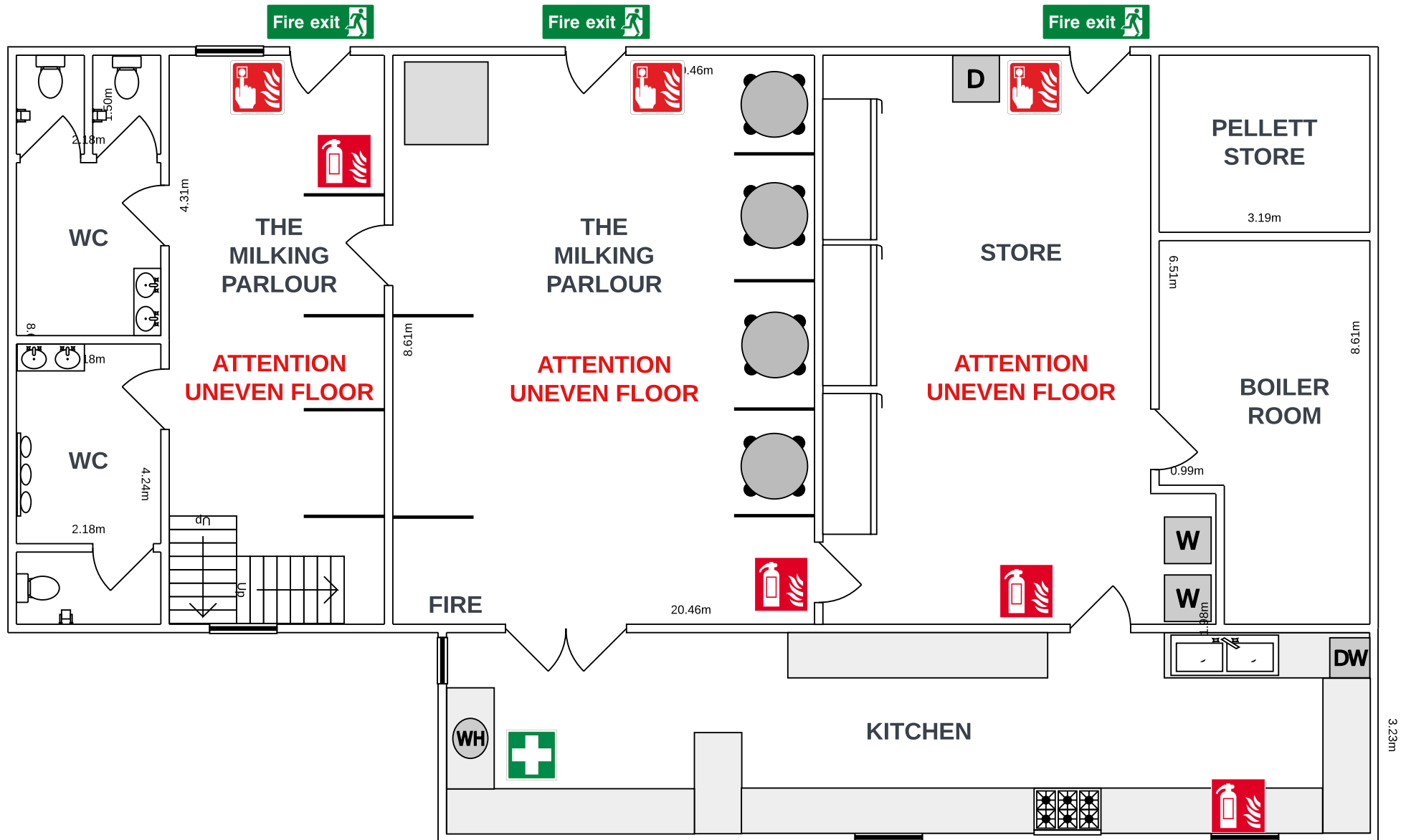
1. All electrical appliances provided by The Supplier for use at The Venue must be PAT tested not exceeding an expiry date of more than forty-eight months from the date of the Event.
2. The Venue can be accessed the day before The Event from 12:00pm Monday to Saturday and 10:00am on Sunday.
3. Where The Supplier is contracted to provide catering services, it is the sole responsibility of The Supplier to deliver their services in line with their Contract with the Client.
4. All Equipment and Materials belonging to The Supplier must be removed from The Venue unless specific alternative arrangements are made directly with a New House Farm Representative.
5. The Supplier has their own valid Public Liability Insurance in place to adequately carry out their Services at The Venue and will provide proof upon request.
6. The Supplier understands The Venue is a historic site consisting of buildings that in various locations has low-hanging beams, uneven surfaces and surfaces that may be slippery when wet.
7. The Supplier must familiarise themselves with the safety provisions at The Venue (overleaf pages 3-5) noting:
  - a. All fire exits and alarm points
  - b. The location of all fire extinguishers
  - c. The location of the fire assembly point being '*The Main Car Park*'
8. The Supplier is responsible for the health and safety of their own staff. Any questions or concerns relating to the safety of The Supplier or Client are to be raised to a New House Farm Representative before the Services are carried out or at the earliest opportunity before vacating The Venue.
9. All accidents that occur on site are to be reported to a New House Farm Representative immediately regardless of immediate severity and before The Supplier vacates The Venue.
10. Any Equipment and Materials used for the provision of the Services and belonging to The Venue, which is damaged, lost or unduly worn due to negligence, misuse, or wilful action by The Supplier or its employees must be replaced at the Supplier's own expense.
11. All vehicles brought on site must be adequately insured by The Supplier and/or its employees.
12. Any Vehicle, Equipment or Materials brought on site is at the owner's risk and The Venue holds no liability for this.
13. The Milking Parlour (located beneath The Hayloft) is out of bounds to all guests of the wedding party unless specifically booked for The Event
14. Upon vacating The Site, it is adequately cleaned and left tidy with all rubbish disposed of using the provided external bins.
15. All kitchen cloths, wipes or other contaminated materials must be placed in the red metal bins. The bins must be emptied and all contents removed from site on The Suppliers departure. This is a condition of The Venue's insurance, and any failure would invalidate a fire claim.
16. The Supplier acknowledges the location of the Gas Range Automatic Cut out Mushroom Button and will at no point leave the kitchen unattended when the gas range is lit.
17. The Supplier acknowledges that smoking or vaping is prohibited in all buildings.

By signing this form, you The Supplier and its subordinates agree to the below information where The Site means (New House Farm, Lorton, Cockermouth, CA13 9UU) and The Supplier being you the supplier as listed above.

## THE HAYLOFT, UPPER FLOOR – WEDDING BARN



# THE HAYLOFT, LOWER FLOOR – MILKING PARLOUR

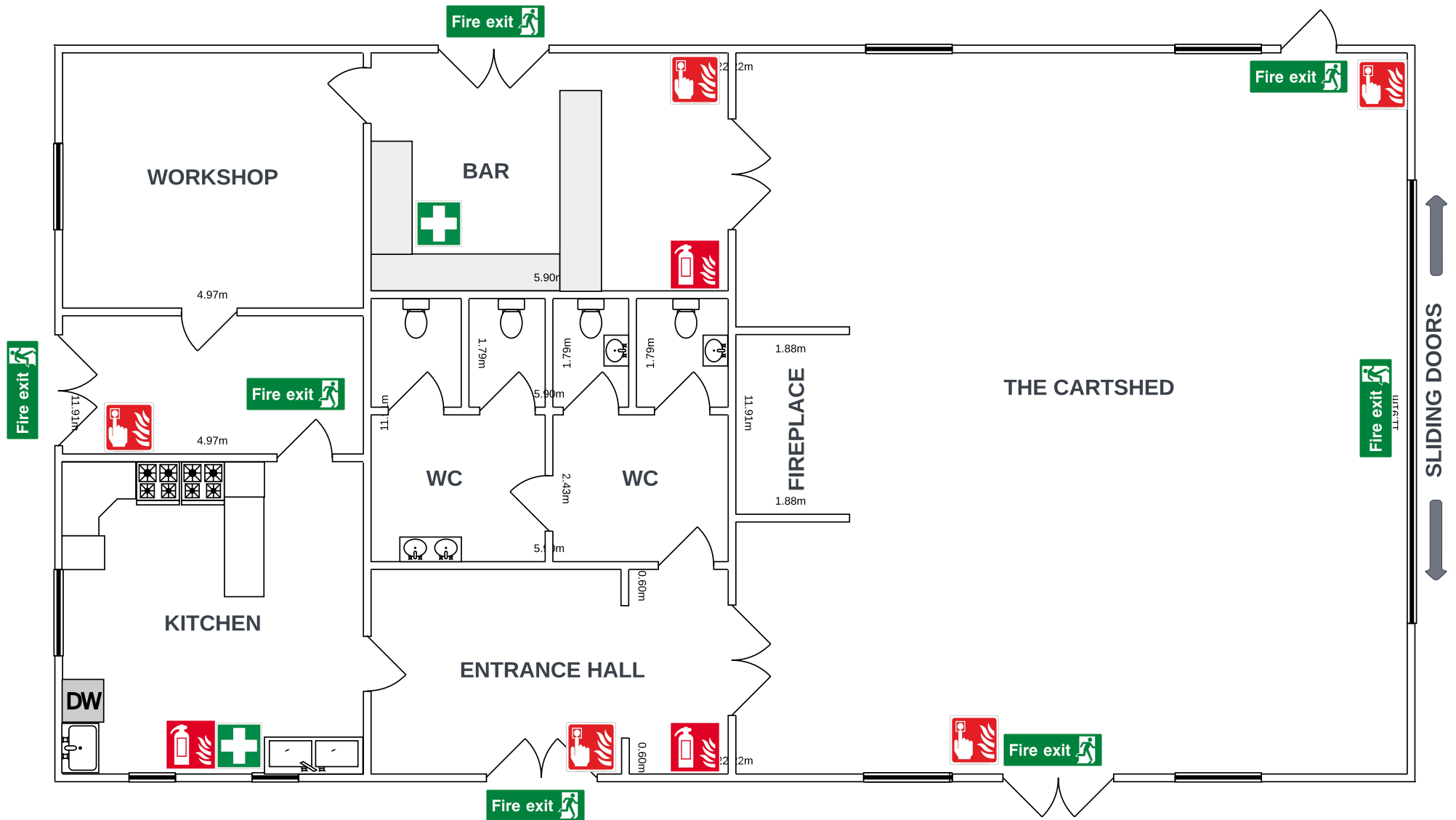





**FIRE ALARM POINT**

**FIRST AID POINT**

**FIRE SAFETY EQUIPMENT**

# THE CARTSHED



-  FIRE ALARM POINT
-  FIRST AID POINT
-  FIRE SAFETY EQUIPMENT